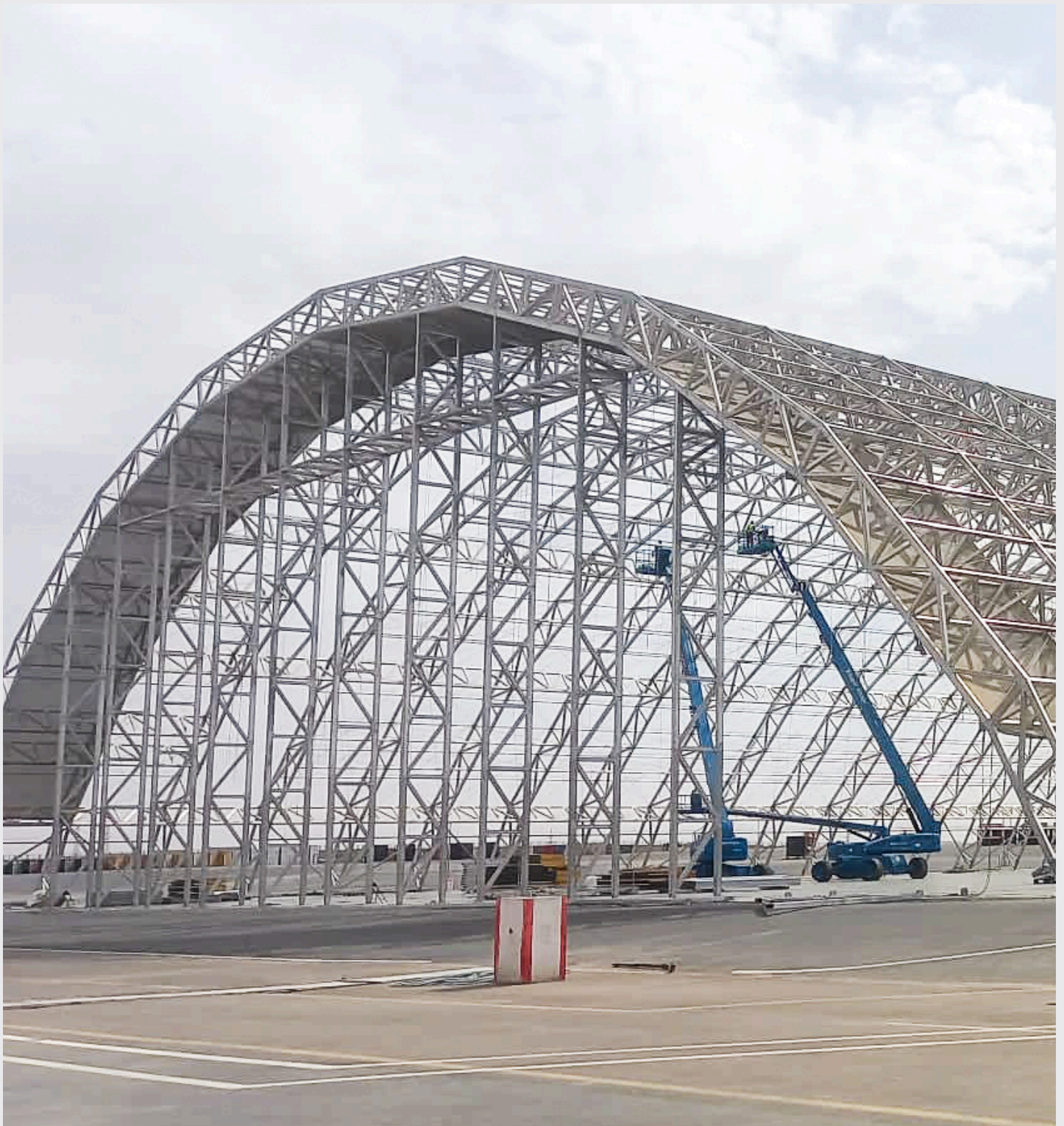
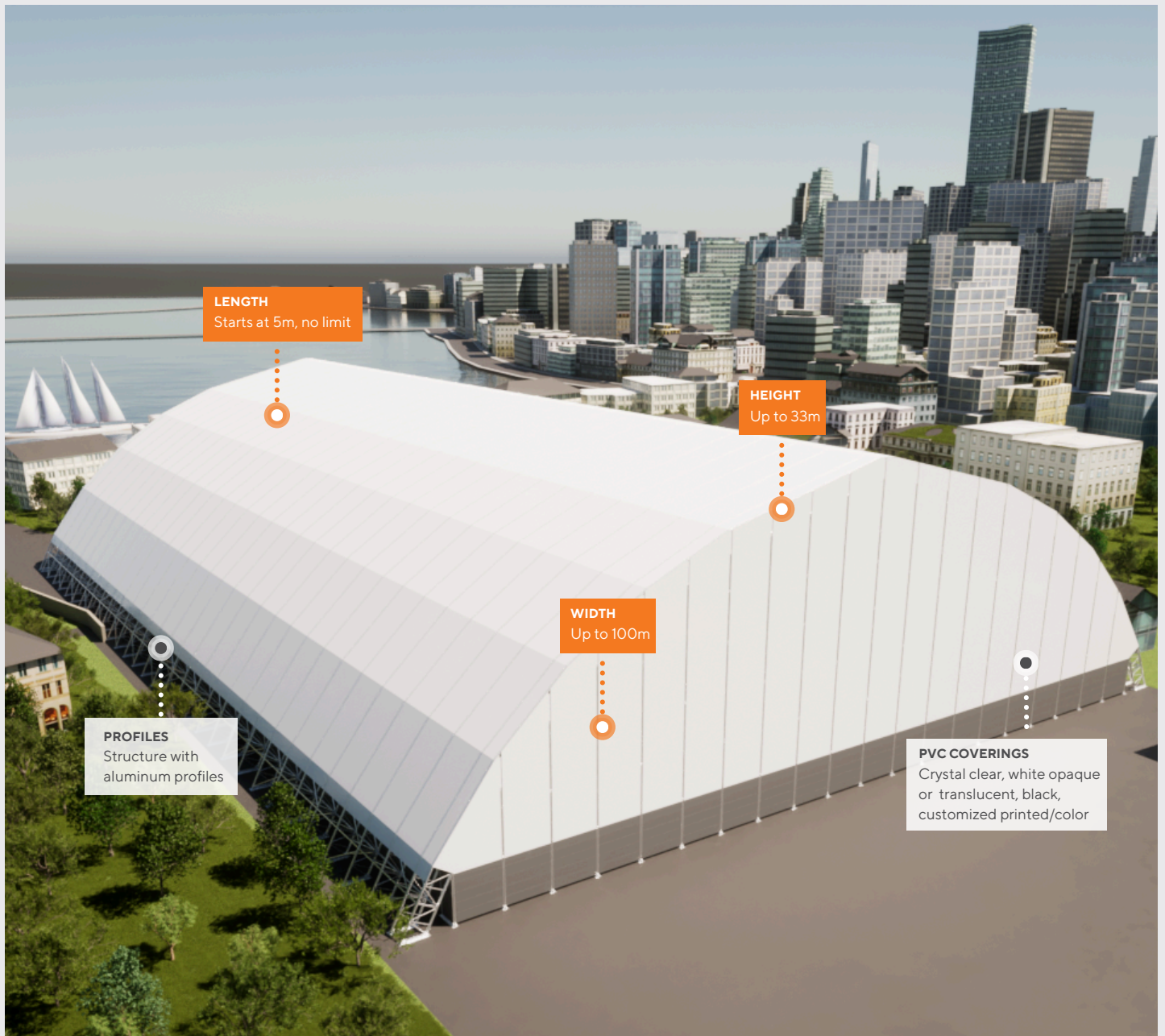


# IRMARFER PRODUCTS

## THE ARCH TRUSS





# THE ARCH TRUSS

The arch truss was designed to be a stable and resistant framework, with huge rigging capacity.

The wide usable area, reaching 100m free-span, allows it to be used for large-scale projects, from hangars to sports halls, creating the perfect atmosphere for your needs and fully functional space.

The aluminium construction of these structures guarantees it's lightweight, which makes the transport and installation processes easier.

Flexibility in design, it's designed to meet the specific project requirements